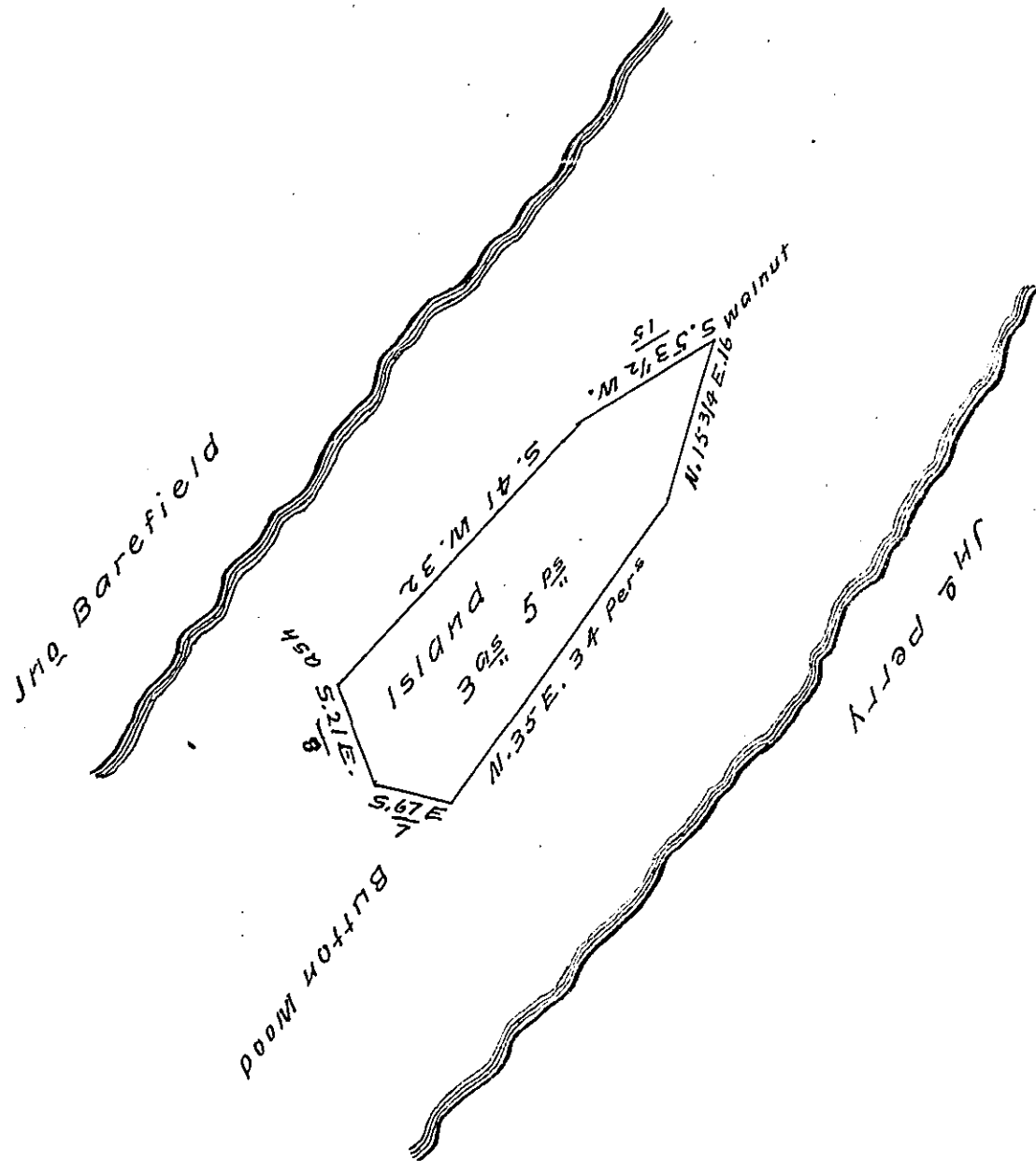


FORM NO 1.



surveyed the above described Island on the 23rd day of June 1815 in pursuance of a Warrant granted to William Devling bearing date the 17th day of June 1815, Containing three acres & five perches strict measure Situate near the middle of the west branch of the Susquehanna about five miles above the mouth of Young-Womans Creek. The farm of John Perry opposite on the Centre County side and land claimed by John Barefield on Lycoming County side in Dunstable Township, known by the name of Skin Town Island in Lycoming County

David McMicken D.S

To Rich^d. T. Leech. Esq^t }
 Surveyor General

IN TESTIMONY that the above is a copy of the original remaining on file in the Department of Internal Affairs of Pennsylvania, made conformably to an Act of Assembly approved the 16th day of February, 1833, I have hereunto set my Hand and caused the Seal of said Department to be affixed at Harrisburg, this Twenty third day of December 1907

Henry Howell
 Secretary of Internal Affairs.